



CIVILS

Hydro-Valve Novo Vortex Flow Control

The Hydro-Valve Novo is a vortex flow control device for throttling the flow rate of stormwater before discharge into a local storm drain or water course.

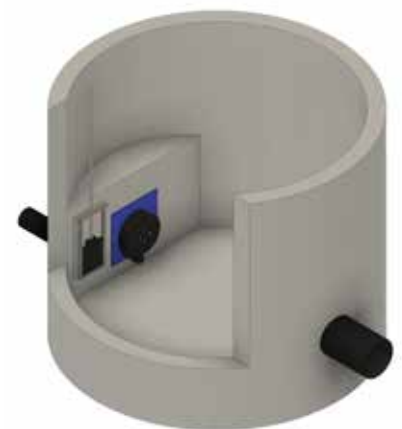
It is available in a range of sizes with varying flow rate to suit all specifications and is supplied with a Penstock which acts as a bypass facility to suit a specific specification. The system is used to control the flow of stormwater from the attenuation tank preventing downstream flooding during heavy rainfall.

Manufactured to customer specifications in order to achieve a specified flow rate at a given head height. This self-activating device uses vortex principles to control and attenuate stormwater flow without the need for moving parts or the need for an external power source.

Features & Benefits

- Typical flow rate: 1-50 l/s*
- Typical head heights: 450-3000mm*
- Fast installation
- Customised specification
- 3-6 times greater orifice CSA
- Hydraulic data available

**Contact JFC for further information.*



UNITED KINGDOM

25 Goodlass Road, Speke
Liverpool L24 9HJ, UK

Tel. +44 1928 583391
Email: infouk@jfccivils.com

IRELAND

JFC Manufacturing Co. Ltd. Weir Road,
Tuam, Co. Galway, H54 RX46, Ireland

Tel. +353 93 24066
Email: info@jfccivils.com