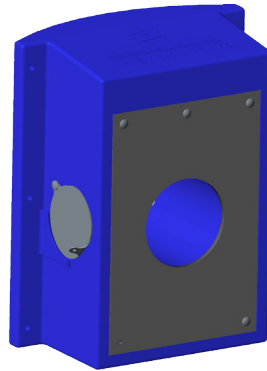


Hydro-Plate & Hydro-Plate Slider

The Hydro-Plate is an orifice type flow control for throttling the flow rate of stormwater before discharge into a local storm drain or water course.

It is available in a range of sizes with varying flow rates to suit all specifications. It is used to control the flow from the attenuation tank preventing downstream flooding during periods of heavy rainfall. Manufactured to customer specifications in order to achieve a specified flow rate at a given head height. This self-activating device uses an orifice principle to control and attenuate stormwater flow without the need for moving parts or an external power source. They are available in a variety of models to suit the application and customer specification.

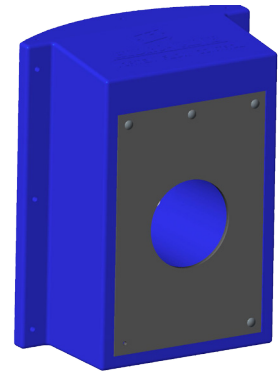


Hydro-Plate
(Fixed With By-Pass)

| CURVED BACK | FLAT BACK |
|-------------|-----------|
| 1200mm | 1050mm |
| 1350mm | 1800mm |
| 1500mm | 2100mm |
| | 2400mm |

Features & Benefits

- Typical flow rate: 5-300L/s
- Typical head heights: 450-3000mm
- Fast installation
- Bypass drain-down
- Customised specification
- Hydraulic data available



Hydro-Plate
(Fixed Without By-Pass)

| CURVED BACK | FLAT BACK |
|-------------|-----------|
| 1200mm | 1050mm |
| 1350mm | 1800mm |
| 1500mm | 2100mm |
| | 2400mm |

Features & Benefits

- Typical flow rate: 5-700L/s
- Typical head heights: 450-3000mm
- Fast installation
- Customised specification
- Hydraulic data available



CIVILS

Quality Plastic Solutions

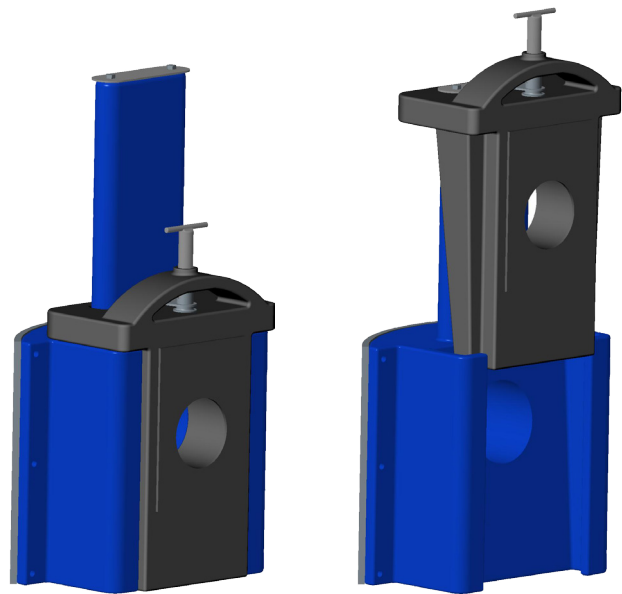
Hydro-Plate & Hydro-Plate Slider

Hydro-Plate Slider

| CURVED BACK | FLAT BACK |
|-------------|-----------|
| 800mm | 1500mm |
| 1050mm | 1800mm |
| 1200mm | 2100mm |
| | 2400mm |

Features & Benefits

- Typical flow rate: 5-100L/s
- Typical head heights: 450-3000mm
- Innovative and unique sliding mechanism allows for quick and easy operation from ground level should maintenance be required
- Lockable in the open and closed positions
- Removes the need for a penstock
- Design allows for direct unobstructed access to the downstream pipe



Closed Position

Open Position

JFC CIVILS UK

25 Goodlass Road, Speke
Liverpool L24 9HJ, United Kingdom

Tel. +44 1928 583 391
Email. infouk@jfccivils.com

JFC CIVILS IRELAND

JFC Manufacturing Co. Ltd.
Weir Road, Tuam, Co. Galway, Ireland

Tel. +353 93 24066
Email. info@jfccivils.com