



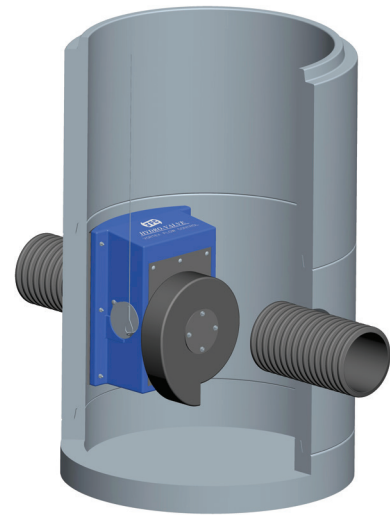
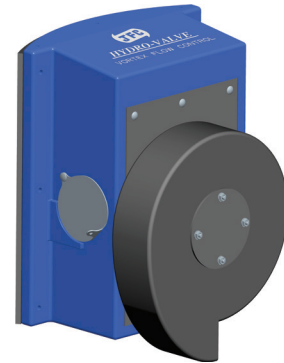
CIVILS

Quality Plastic Solutions

Hydro-Valve Vortex Flow Control

The Hydro-Valve is a vortex flow control device for throttling the flow rate of stormwater before discharge into a local storm drain or water course.

It is available in a range of sizes with varying flow rates to suit all specifications. It is used to control the flow of stormwater from the attenuation tank preventing downstream flooding during periods of heavy rainfall. Manufactured to customer specifications in order to achieve a specified flow rate at a given head height. This self-activating device uses vortex principles to control and attenuate stormwater flow without the need for moving parts or the need for an external power source.



Features & Benefits

- Typical flow rate: 1-50L/s*
- Typical head heights: 450-3000mm*
- WRC certification
- Fast installation
- Customised specification
- 3-6 times greater orifice CSA
- Hydraulic data available

* Contact JFC for further information.

Hydro-Valve Fits The
Following Manhole Types

CURVED BACK	FLAT BACK**
1200mm	1050mm
1350mm	1800mm
1500mm	2100mm
	2400mm

** Requires a concrete shuttered wall on the inside of the manhole chamber.



CIVILS

Quality Plastic Solutions

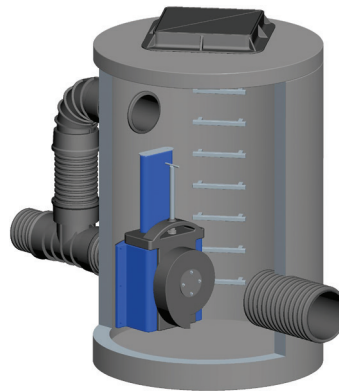
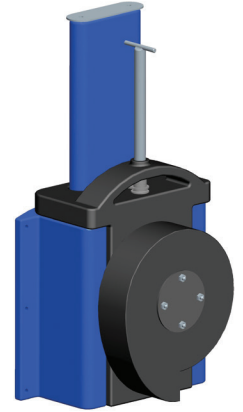
Hydro-Valve Slider Vortex Flow Control

The Hydro-Valve Slider has the added benefit of an innovative and unique sliding vortex chamber feature for ease of inspection and maintenance.

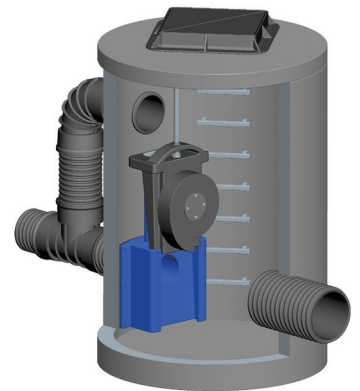
Features & Benefits

- Typical flow rate: 1-20L/s*
- Typical head heights: 450-2500mm*
- Innovative and unique sliding vortex valve chamber allows for quick and easy operation from ground level should maintenance be required
- Lockable in open and closed positions
- Removes the need for a Pen-Stock
- Design allows for direct unobstructed access to the downstream pipe

* Contact JFC for further information.



Closed Position



Open Position

Hydro-Valve Slider Fits The Following Manhole Types

CURVED BACK	FLAT BACK**
800mm	1500mm
1050mm	1800mm
1200mm	2100mm
	2400mm

** Requires a concrete shuttered wall on the inside of the manhole chamber.

JFC CIVILS UK

25 Goodlass Road, Speke
Liverpool L24 9HJ, United Kingdom

Tel. +44 1928 583 391
Email. infouk@jfccivils.com

JFC CIVILS IRELAND

JFC Manufacturing Co. Ltd.
Weir Road, Tuam, Co. Galway, Ireland

Tel. +353 93 24066
Email. info@jfccivils.com