



Hydro-Valve Mini

Hydro-Valve Mini

JFC Hydro-Valve Mini fits into one of the following manhole types depending on specification:

Curved Back (mm)	Flat Back** (mm)
800	1500
1050	1800
1200	2100

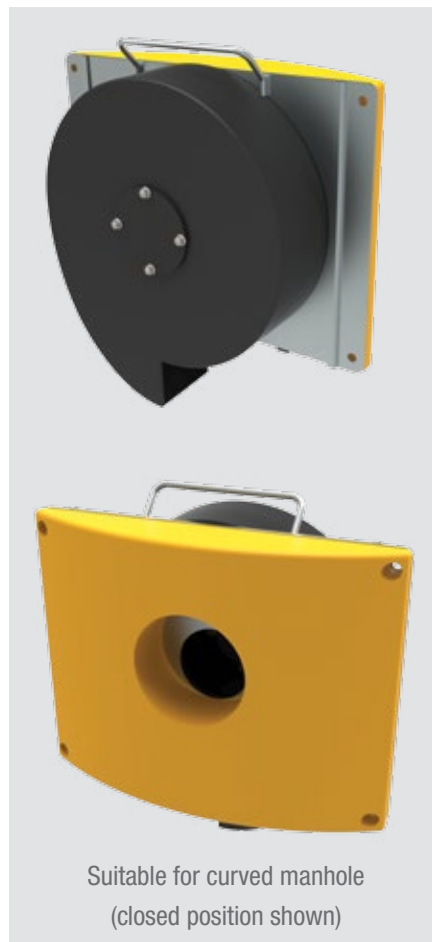
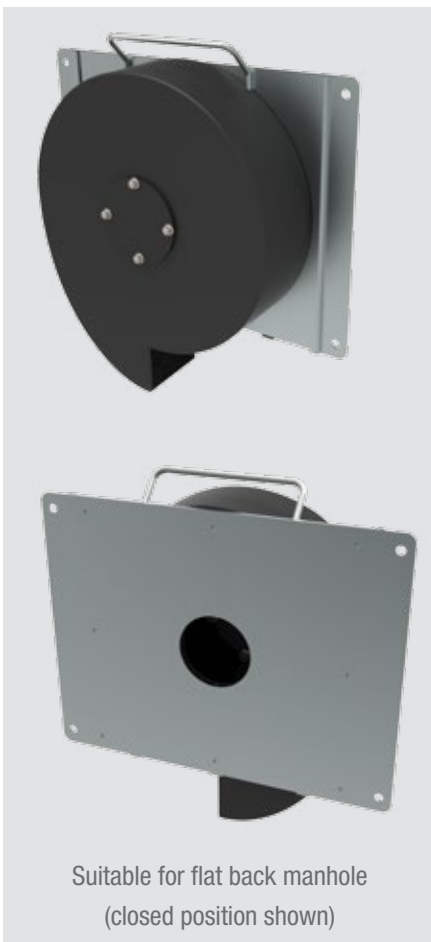
Hydro-Valve Mini 1 (Typical flow rate l/s)*	Hydro-Valve Mini 2 (Typical flow rate l/s)*
1-3	1-5
Typical Head Heights (mm)*	Typical Head Heights (mm)*
400 - 3000	400 - 3000

**Requires a concrete shuttered wall on the inside of the manhole cover

*Contact JFC for further information

Features & Benefits

- Fast installation
- Small compact design
- Stainless steel sliding vortex plate
- Greater access to downstream pipe
- Vortex chamber can be removed



It is believed that the information given in this publication is correct, however products marketed by the company are subject to continuous development and the company therefore reserves the right to alter information without notice. Copyright JFC April 2015 Rev01