



Shropshire Residential Site - Attenuation System

JFC is a leading international provider of Stormwater Management solutions. We provide a complete range of attenuation and water management solutions including JFC HydroChamber attenuation system, JFC Hydro-Valve (Vortex Flow Control), as well as a range of water management solutions.

Attenuation & Water Management Solutions

- HydroChamber Attenuation System
- Hydro-Valve
- Hydro-Valve Slider
- Hydro-Valve Mini

Land Drainage

- Perforated Twinwall CorriPipe™
- CorriPipe™ Fittings & Accessories

Ducting

- CorriDuct - General Purpose
- CorriDuct Coil
- ENAT CorriDuct Sticks
- CorriDuct Fittings

JFC Plastics Ltd

Hardwick Road, Astmoor Industrial Estate, Runcorn, Cheshire, WA7 1PH

t: +44 (0) 1928 583 391
e: sales@jfcplastics.com
w: www.jfcplastics.com

JFC Plastics deliver tailored attenuation system for Shropshire residential site

Project Outline:

Taylor Wimpey Homes of Tamworth Staffordshire had an issue with stormwater attenuation at a prospective residential site based in Broseley Shropshire. They required an attenuation system that would meet the needs of the site while also being as cost effective as possible in order for the project to be viable. As part of this project JFC Plastics was awarded the contract for the supply of the necessary attenuation system through one of our trade partners Severn Trent Water.

- The project was faced with a number of challenges, the site itself had a number of ground level changes and the attenuation system necessary as a result, was one that could cater for a 1 in 100 year storm.
- The solution needed also to be a cost effective in order for the project to be viable as the total targeted storage for the site was a sizeable 433m³.
- An additional issue on the site was the irregular shaped site footprint and the limited number of access points in which to install the attenuation system.

Project Contribution:

- JFC HydroChamber Attenuation System
- Full Design and Technical Assistance Service

HydroChamber:

The JFC HydroChamber is an arched chamber attenuation system designed specifically for building underground storage tanks for stormwater runoff in attenuation and soakaway applications. It has a number of advantages over other similar type products, including BBA certification for HGV loading, superior structural strength, silt management, maintenance and inspection capabilities as well as cost effectiveness. The corrugated arch shape of the HydroChamber provides excellent structural strength confirmed by independently witnessed field tests where the chambers were exposed to loads 3.5 times greater than that expected in normal service.

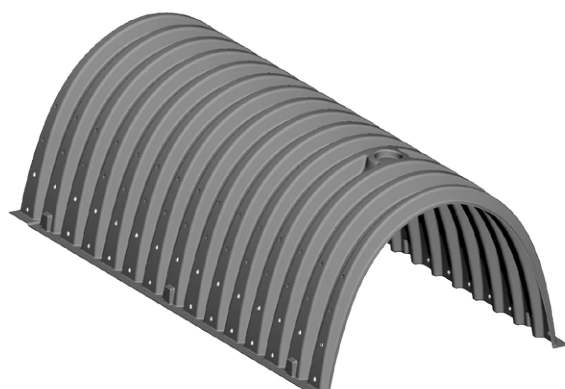
HydroChambers can be used in three different types of Stormwater management systems

- Infiltration / Soak-away
- Permeable Attenuation System
- Impermeable Attenuation System

A site audit will determine the most suitable system

Features & Benefits:

- BBA Certification
- Superior Structural Integrity
- Visual and Camera Inspection
- Silt/Grit Management System
- Stackable for storage on site
- Design and installation Manual Provided
- Sizing Calculator
- AutoCAD Drawings
- Full Technical Assistance
- Installation Service





Shropshire Residential Site - Attenuation System

JFC is a leading international provider of Stormwater Management solutions. We provide a complete range of attenuation and water management solutions including JFC HydroChamber attenuation system, JFC Hydro-Valve (Vortex Flow Control), as well as a range of water management solutions.

Attenuation & Water Management Solutions

- HydroChamber Attenuation System
- Hydro-Valve
- Hydro-Valve Slider
- Hydro-Valve Mini

Land Drainage

- Perforated Twinwall CorriPipe™
- CorriPipe™ Fittings & Accessories

Ducting

- CorriDuct - General Purpose
- CorriDuct Coil
- ENAT CorriDuct Sticks
- CorriDuct Fittings

JFC Plastics Ltd

Hardwick Road, Astmoor Industrial Estate, Runcorn, Cheshire, WA7 1PH

t: +44 (0) 1928 583 391
e: sales@jfcplastics.com
w: www.jfcplastics.com

JFC Service Solution:

While the installation proved to be challenging due to difficult terrain of the site, (the ground was particularly wet/hilly with a heavy clay presence) and access to the site was limited, the HydroChamber proved to be the perfect attenuation solution for this site.

- The HydroChamber required for this project was non-standard in design and had to be specifically designed by our R&D team to deliver a solution tailored to the site footprint.
- AutoCAD Drawings
- Full Technical Assistance

Together with our distribution partner Severn Trent Water we successfully delivered a tailored solution to suit the needs of this site. All of the above culminated in developing a great working relationship with Taylor Wimpey Homes and the site contractors involved Tonbrie Construction.

Site manager Craig Hill was very complimentary about the professionalism and speed of the installation, and emphasized how the HydroChamber system had effectively “saved the day for the site”.

“Our HydroChamber attenuation system offers a great deal of flexibility, and can be used for difficult specifications, making it perfect for a project such as this. This project presented the perfect opportunity to showcase just how well our HydroChamber product can add value to customers projects, saving time and money on site.” says David Williams JFC Plastics.

