



Quality Plastic Solutions



## Large Diameter CorriPipe™ XL 750mm, 900mm & 1050mm

JFC has further expanded its range of CorriPipe™ products with the introduction of 750mm, 900mm and 1050mm sizes.

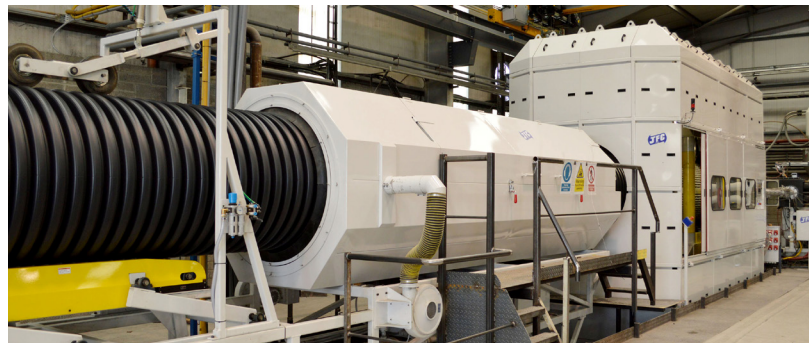


These sizes are manufactured using the most advanced extrusion and polymer processing technology available. This technology is coupled with cutting edge materials to provide the ultimate large diameter surface and stormwater drainage pipe.

Large diameter CorriPipe™ XL is manufactured from recycled HDPE utilising a twin extrusion process. The inner and outer layers are simultaneously extruded, one inside the other and heat welded together in one continuous

process. The outer solid wall is corrugated providing excellent structural strength, reducing the possibility of on-site damage. The inner wall has a smooth seamless finish to optimise hydraulic flow.

Our CorriPipe™ twinwall drainage pipe has been used across numerous large scale projects throughout Ireland and the United Kingdom. Offering expert advice and a comprehensive range of pipe, JFC is the brand of choice for leading contractors and project managers.



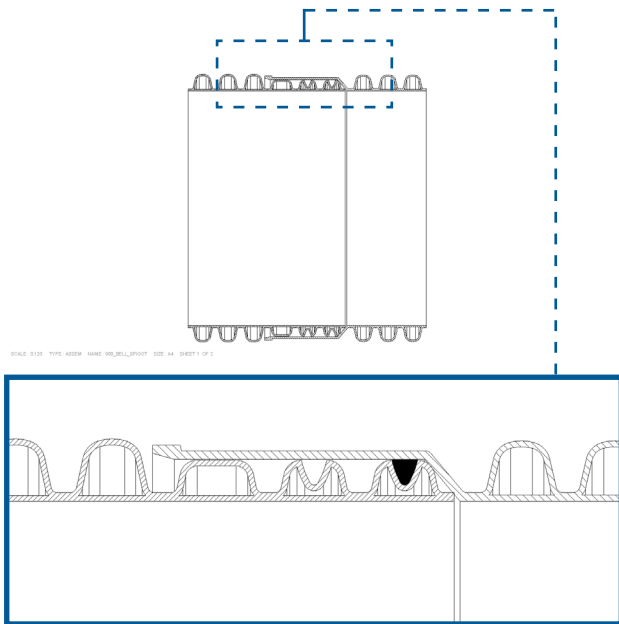
## Features & Benefits

- **Superior structural strength** with SN2, SN4, and SN6 options available.
- Unique **Integrated socketing system** (see overleaf for further information - traditional independent sockets also available).
- **Smooth internal plastic bore with reduced hydraulic resistance.** Manning's coefficient of 0.012 allows for greater flow capacity and also a greater factor of safety. This also reduces sediment or debris build-up when compared to concrete or steel.
- **Lightweight** when compared to traditional materials such as concrete or steel. E.g. (Up to 90% lighter than concrete).
- **Fully leak tested** to HAPAS requirements when used with rubber gaskets.
- Standard 6m lengths make it **quick and easy to install**, eliminating wastage and reduces labour and plant costs. E.g. (Up to 6 times faster installation compared to concrete).
- **Parallel corrugations** allow pipe to be easily cut square on site as required. (Spiral wound pipe makes it very difficult to create a square cut on site if required)
- JFC CorriPipe™ XL is available **unperforated, fully perforated or half perforated.**
- **Manufactured from exceptionally durable HDPE material** with excellent corrosion resistance and long term performance.
- **Resistant to most naturally occurring chemicals** and is therefore suitable for use on the majority of soil conditions.
- Can typically be installed with cover depths from 0.6 to 10m\*.

\* Contact JFC for guidance on min and max burial depths

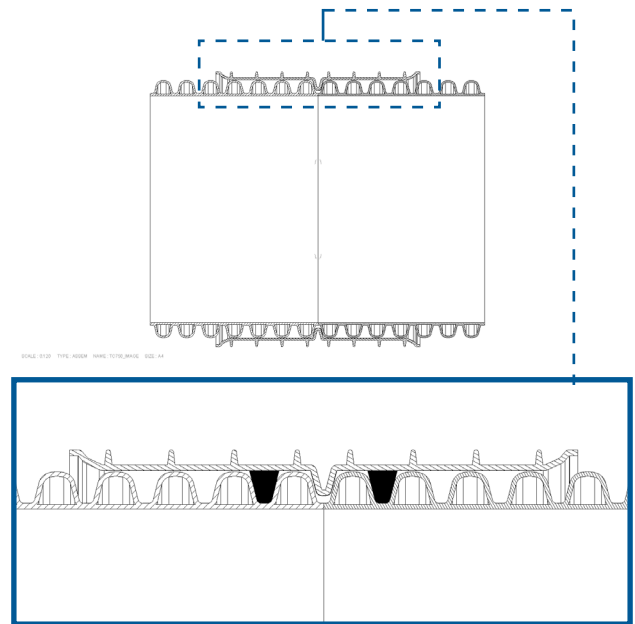
# Unique Integrated Socketing System

## Integrated Bell and Spigot Joint



- Removes need to deepen pipe bedding at joint
- 1 seal per joint
- Minimal distortion during transportation and storage

## Traditional Independent Coupling



- Coupling option for plain ended pipe

## Applications

Ideal for gravity surface water and stormwater drainage applications, this pipe is used for Highway filter and carrier drains, Rail Track Drainage, Golf course drainage, Catchpits and Land reclamation projects. Available in black as standard.

## Quality Assurance

Our products are also quality approved to the internationally recognised ISO 9001 – 2008 standard.

## Sizes

Product Code	Description	Nominal Internal Diameter (mm)	Nominal Outer Diameter (mm)	Standard Lengths
750TP	750mm Fully Perforated CorriPipe™	750	842	6m
750TPU	750mm Unperforated CorriPipe™	750	842	6m
750TPH	750mm Half Perforated CorriPipe™	750	842	6m
900TP	900mm Fully Perforated CorriPipe™	900	1020	6m
900TPU	900mm Unperforated CorriPipe™	900	1020	6m
900TPH	900mm Half Perforated CorriPipe™	900	1020	6m
1050TP	1050mm Fully Perforated CorriPipe™	1050	1190	6m
1050TPU	1050mm Unperforated CorriPipe™	1050	1190	6m
1050TPH	1050mm Half Perforated CorriPipe™	1050	1190	6m

## Contact JFC

JFC Plastics Ltd  
 Hardwick Road,  
 Astmoor Ind Estate,  
 Runcorn Cheshire, WA7 1PH.

Tel: + 44 (0) 1928 583 391  
 Email: sales@jfcplastics.com  
 Website: www.jfcplastics.com



Quality Plastic Solutions